



Portsmouth Eastward Ho Eastward Ho – Moonlight Lady

Make:	Portsmouth Eastward Ho	Model:	Eastward Ho
Location:	Port Sanilac, MI, USA	Price:	USD 10,500
Length:	23 ft	Year:	1975
Builder:	Portsmouth Eastward Ho	Designer:	Eldredge-McInnis Inc.
Condition:	Used	LOA:	23 ft 8 in

Moonlight Lady

This a compact yet roomy and traditional sailboat with full headroom in the doghouse, good all around visibility and a bright interior due to the large cabin windows. Original woodwork and interior. Her generous freeboard, wide beam, and significant ballast make her easy to handle in any kind of weather... **REDUCED FOR QUICK SALE- MAKE AN OFFER**
Owner eager to sell ... stop by, inspect and make an offer today!

Measurements

LOA:	23 ft 8 in	Ballast:	3600 lb
LWL:	20 ft	Displacement:	7000 lb
Beam:	8 ft 8 in	Fuel Tanks Capacity:	15 gal
Max Bridge Clearance:	30 ft 6 in	Fresh Water Tanks Capacity:	15 gal
Max Draft:	3 ft 10 in	Holding Tanks Material:	Other
		Number of twin berths:	4
		Number of Heads:	1

Propulsion

Number of Engines:	1	Total Power:	20 hp
Primary Engines:	Inboard		
Engine Make:	Bukh (Westerbeke)		

Accommodations

- Sleeps 4
- 6' plus headroom
- Table with post
- Enclosed head
- Hanging locker

Galley

- Alcohol Stove - 2 burner
- Ice box
- Stainless pump sink

Electronics

- Depth sounder - shallow alarm
- Marine radio
- Speakers
- Loran
- Compass - Ritchie
- Extra comapsss - Gemini

- Knot meter
- Shore Power
- Alcohol furnace

Sailboat hardware

- Main sail
- Standard Jib
- 110 Genoa
- 150 Genoa
- Storm Jib
- Sail covers for main and jib
- Spinnaker pole
- Main and jib booms

Deck

- 3 Halyard winches
- 2 Sheet winches
- Lifelines
- Running and standing rigging
- Bow and Stern pulpits

Additional

- 4 Dock lines
- 7 Fenders
- Boat hook
- Air horn
- Bell
- Cockpit Cushions
- Swim Ladder
- Flair kit
- Horseshoe lifering
- Oil lamp
- Lake Huron Chart Book

- Lake Michigan Chart Book
- Chapmans
- Danforth anchor
- #20 Plow anchor
- #35 Plow anchor
- Sea anchor
- Mooring buoy
- Various lake charts

Disclaimer

The Company offers the details of this vessel in good faith but cannot guarantee or warrant the accuracy of this information nor warrant the condition of the vessel. A buyer should instruct his agents, or his surveyors, to investigate such details as the buyer desires validated. This vessel is offered subject to prior sale, price change, or withdrawal without notice.

Photos



Companionway



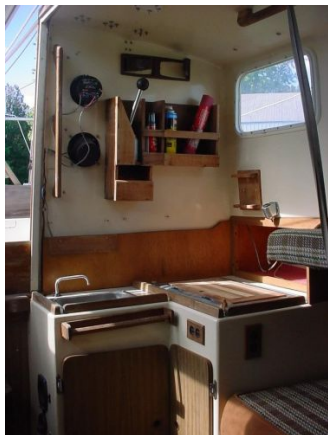
Saloon



Head



Companionway from down below



Galley



Portsmouth Eastward Ho Plaque